

Report to Gouthwaite Board of Management

Hydrological Conditions of the Nidd Catchment – 2024 to March 2025

Rainfall

Figures 1 and 2 show monthly rainfall totals at Scar House rain gauge in mm and as a percentage of the 1991-2020 long-term average (LTA). The wet conditions of winter 2023-24 continued to the end of May. For the Nidd catchment as a whole it was the wettest October to May period in a record length of over 150 years, according to the Met Office Had-UK data set.

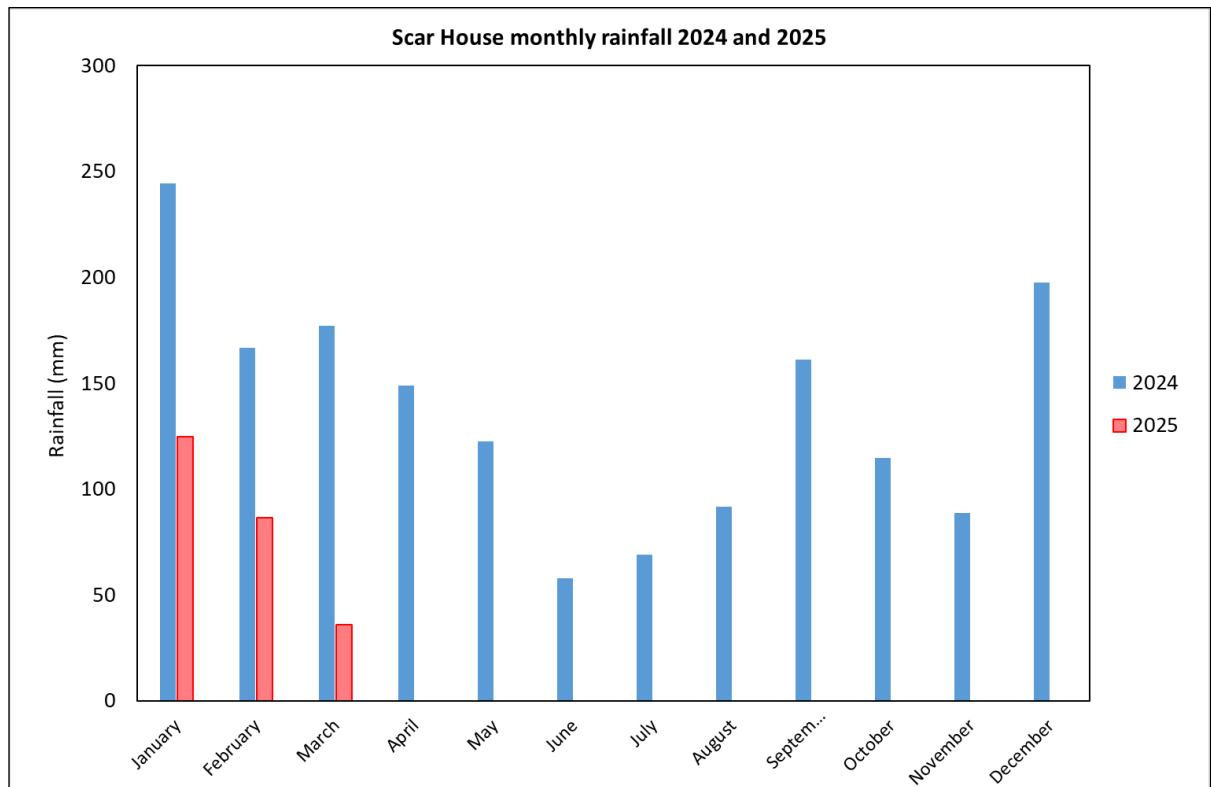


Figure 1: Monthly rainfall totals at Scar House Reservoir

The summer months featured below average rainfall at Scar House. Figure 2 overleaf shows that late autumn and much of the 2024-25 winter also recorded below average rainfall. November was unusually dry until the arrival of Storm Bert on 23rd and only 57% of the LTA rainfall was recorded that month. After slightly above average rainfall in December, the first three months of 2025 have been relatively dry, particularly March with only 34% of the LTA rainfall.

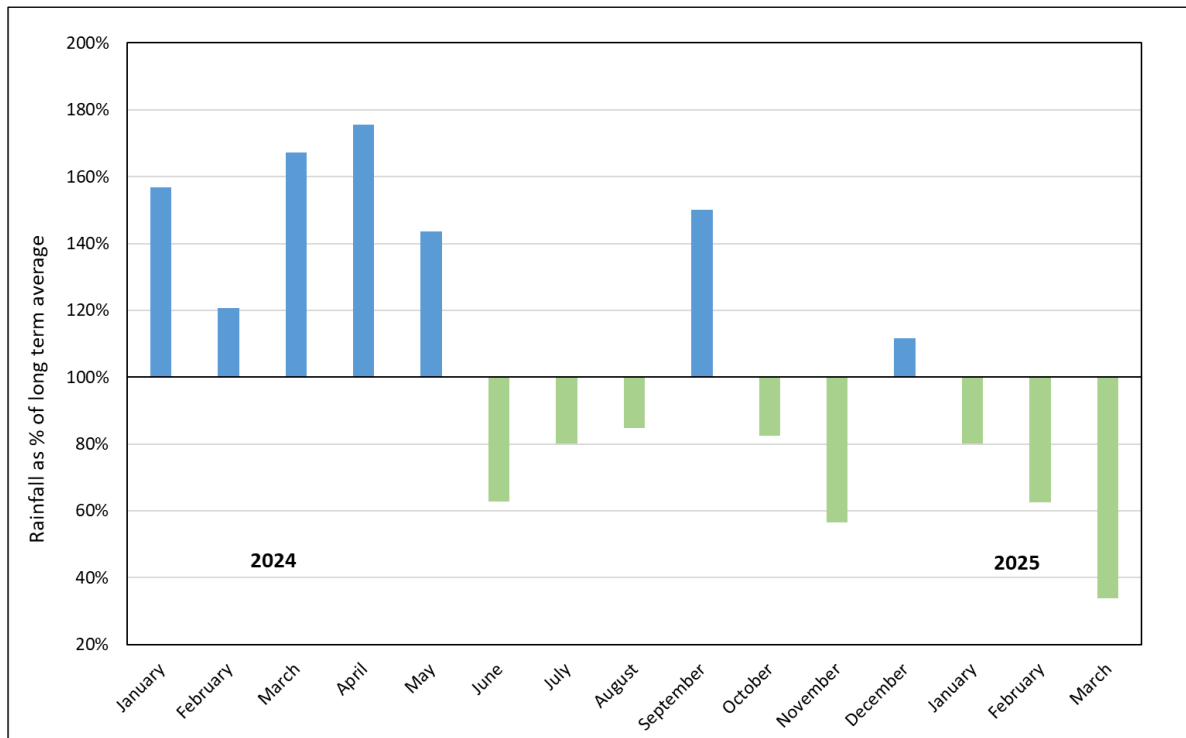


Figure 2. 2024 into 2025 monthly rainfall at Scar House Reservoir as percentage of long-term average

River Flow

Figure 3 shows the monthly mean flows recorded at Birstwith gauging station on the River Nidd for 2024 and early 2025. They are compared with the LTA from the full record of 1975-2024.

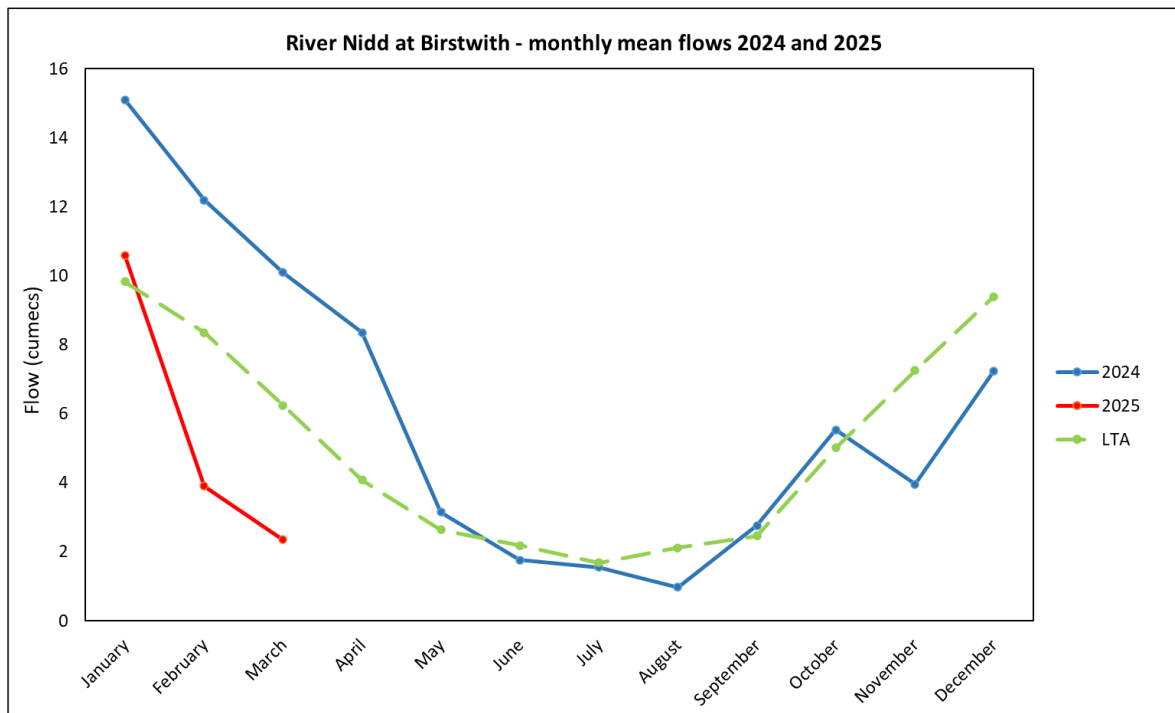


Figure 3: River Nidd monthly mean flow at Birstwith for 2024 to March 2025, compared with the LTA

Due to the wet conditions, monthly mean flows on the River Nidd were well above average for the first four months of 2024. Flows were close to average through the summer and early autumn. Flows were low for the first three weeks of November before a spate in response to Storm Bert. In December and

particularly in February to March 2025 monthly mean flows were below average. This reflected less frequent occurrence of the usual winter spates rather than especially low environmental flows. Gouthwaite Reservoir releases met compensation flow requirements.

Reservoir Operations

It has been agreed with the Board that this year Yorkshire Water (YW) will report on the detail of reservoir levels, operations and releases. The Environment Agency has reviewed independently our reservoir level and downstream flow measurement data. In summary, reservoir levels were drawn down from late March to June 2024 to allow the final phase of siphon installation. During late June and July releases were maintained at 40 MI/d to support Glasshouses fish farm. In early August, with reservoir levels declining, YW contacted the EA to advise a planned reduction in release rates to the statutory 28 MI/d to preserve compensation stocks and also to facilitate works by the owner of Glasshouses fish farm weir. This was approved as both prudent and still in line with operating rules.

The reservoir filled rapidly from 22 to 27 September following almost 100mm rainfall. Since then, reservoir releases have tracked requirements closely. The EA is satisfied that YW has operated Gouthwaite Reservoir with regard to downstream water users and to the river environment, within the constraints of the necessary reservoir safety works.